

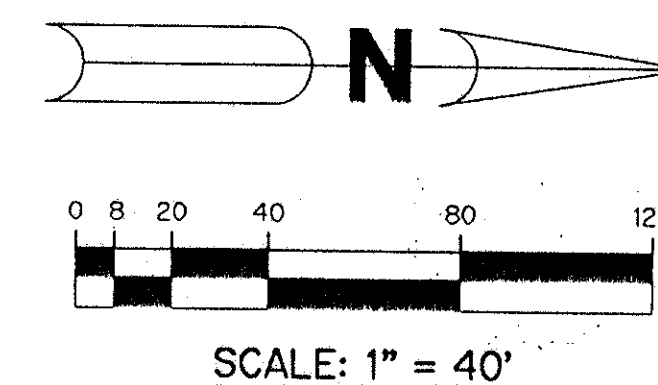
A PART OF THE BAY WINDS PLANNED UNIT DEVELOPMENT

BOCA FALLS - PARCEL "K"

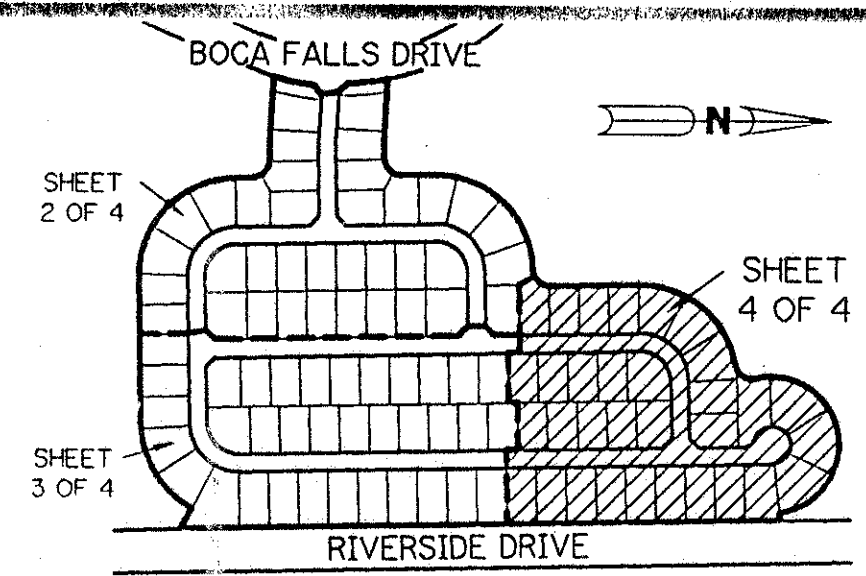
BEING A REPLAT OF ALL OF PARCEL "K" ACCORDING TO THE PLAT OF BOCA FALLS - PLAT ONE AS RECORDED IN PLAT BOOK 73, PAGES 124 THROUGH 131, INCLUSIVE, OF THE PUBLIC RECORDS OF PALM BEACH COUNTY, FLORIDA. LYING IN SECTION 22, TOWNSHIP 47 SOUTH, RANGE 41 EAST

SHEET 4 OF 4 AUGUST, 1994

114



*PET. 80-47B
ROADS 9/1/99 PER UNIT
ASSOC. #0001
ESCROW AGENT FOR
PARKS + SCHOOLS*



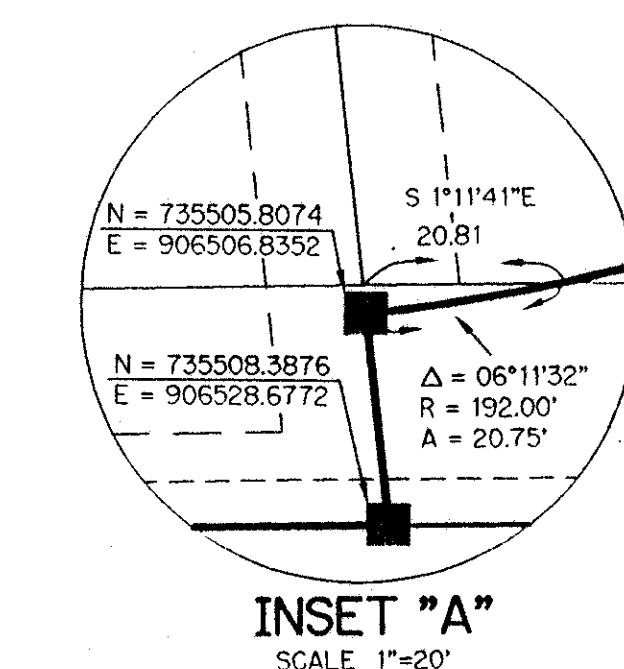
KEY MAP
N.T.S.

(TOTAL)
R=50.00'
Δ=88°36'09"
A=77.32'

TRACT "L5"
BOCA FALLS - PLAT ONE
(P.B. 73, PGS. 124-131)

TRACT "L5"
BOCA FALLS - PLAT ONE
(P.B. 73, PGS. 124-131)

- LEGEND:
- - PERMANENT REFERENCE MONUMENT, P.L.S. #4213
 - - PERMANENT CONTROL POINT, P.L.S. #4213
 - Δ - DELTA ANGLE
 - A - ARC LENGTH
 - BE - BUFFER EASEMENT
 - DE - DRAINAGE EASEMENT
 - L.M.E. - LAKE MAINTENANCE EASEMENT
 - NR - NOT RADIAL
 - N.T.S. - NOT TO SCALE
 - O.R.B. - OFFICIAL RECORD BOOK
 - P.B. - PLAT BOOK
 - PGS. - PAGES
 - P.L.S. - PROFESSIONAL LAND SURVEYOR
 - R - RADIUS
 - R/W - RIGHT-OF-WAY
 - U.E. - UTILITY EASEMENT
 - N = 1000.000 - STATE PLANE COORDINATES
 - E = 1000.000



THIS INSTRUMENT PREPARED BY
PERRY C. WHITE, P.L.S. #213 STATE OF FLORIDA
LAWSON, NOBLE AND ASSOCIATES, INC.
ENGINEERS PLANNERS SURVEYORS
WEST PALM BEACH, FLORIDA

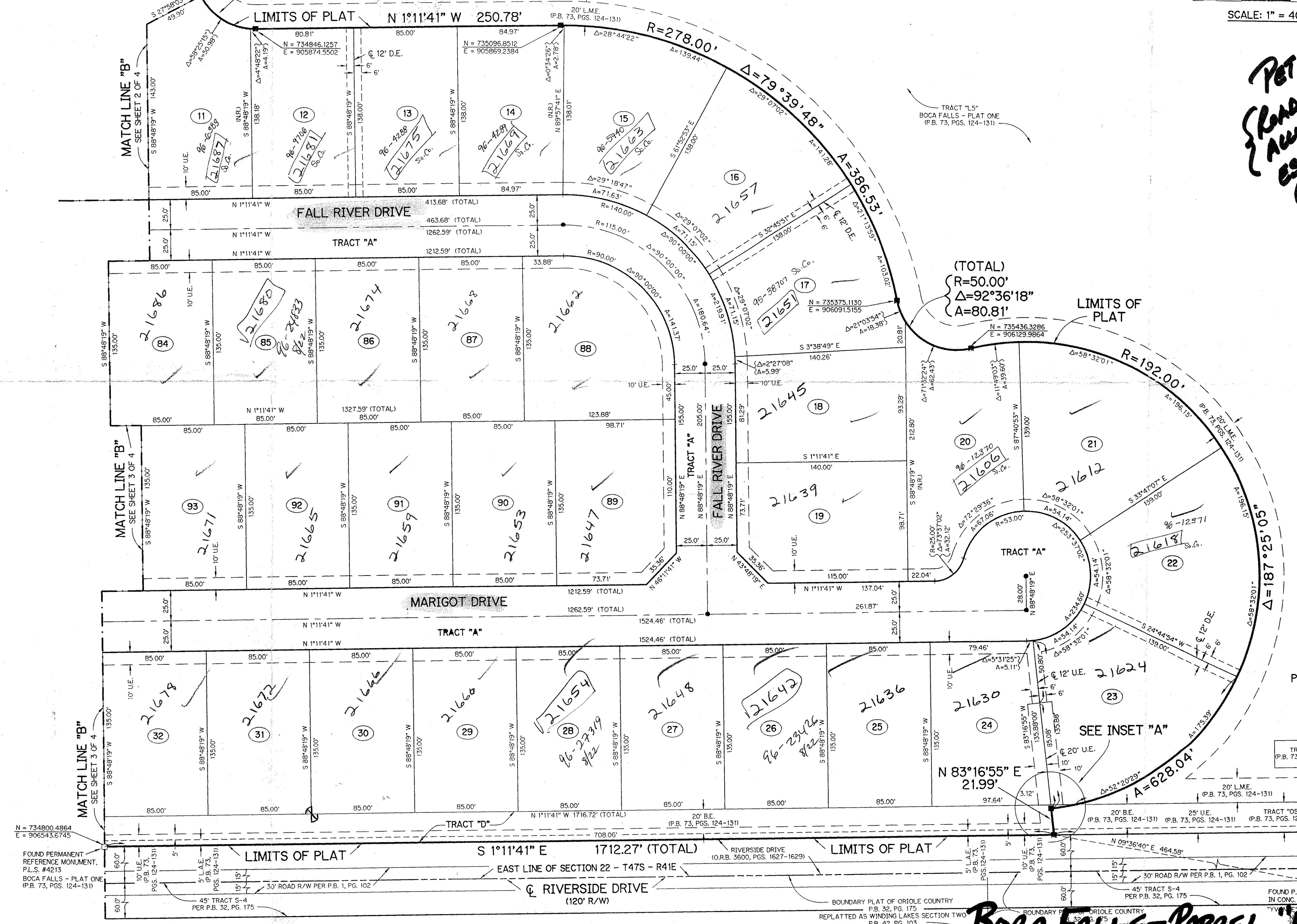
0201-018

7/1/14

SUBDIVISION - Boca Falls Parcel K
BOOK 74 PAGE 114
FLOOD ZONE AO-1 FLOOD MAP #1003
ROAD # 69 ZONING RT
SE 80-47 ZIP CODE 33428
SUB NAME Bay Winds PUD

TAZ-778

BOCA FALLS - PARCEL "K"



FOUND PERMANENT
REFERENCE MONUMENT,
P.L.S. #4213
BOCA FALLS - PLAT ONE
(P.B. 73, PGS. 124-131)

FOUND PERMANENT
REFERENCE MONUMENT,
P.L.S. #4213
BOCA FALLS - PLAT ONE
(P.B. 73, PGS. 124-131)

FOUND PERMANENT
REFERENCE MONUMENT,
P.L.S. #4213
BOCA FALLS - PLAT ONE
(P.B. 73, PGS. 124-131)

FOUND PERMANENT
REFERENCE MONUMENT,
P.L.S. #4213
BOCA FALLS - PLAT ONE
(P.B. 73, PGS. 124-131)

FOUND PERMANENT
REFERENCE MONUMENT,
P.L.S. #4213
BOCA FALLS - PLAT ONE
(P.B. 73, PGS. 124-131)

FOUND PERMANENT
REFERENCE MONUMENT,
P.L.S. #4213
BOCA FALLS - PLAT ONE
(P.B. 73, PGS. 124-131)

FOUND PERMANENT
REFERENCE MONUMENT,
P.L.S. #4213
BOCA FALLS - PLAT ONE
(P.B. 73, PGS. 124-131)